



# ROCKINGHAM LAKES PRIMARY SCHOOL

KINDERGARTEN INFORMATION HANDBOOK  
2025





# Rockingham Lakes Primary School

**School Address:** 26 Laguardia Loop  
Port Kennedy WA 6172

**Phone:** (08) 9523 7800

**Web:** [www.rockinghamlakesps.wa.edu.au](http://www.rockinghamlakesps.wa.edu.au)  
**Email:** [RockinghamLakes.PS@education.wa.edu.au](mailto:RockinghamLakes.PS@education.wa.edu.au)

**Principal:** Meghan McGoldrick

**Deputy Principals:** Ebony Rusconi  
Janet Preston

**Manager Corporate Services:** Erica Clarke

**School Officers:** Sally Reid  
Eloise Kowald



## School App

Rockingham Lakes has the 'Connect Now' App available. Each parent will be given their own secure login to Connect. Connect is totally free and, because it is provided by the Department of Education, very safe. Connect can be accessed via the downloadable app "Connect Now" or via the web at

<https://connect.det.wa.edu.au/>.

If you have multiple children, you only need one login – even if your children attend different public schools.

When you login to Connect you will be able to see information specific to your own child/ren such as:

- The School Space where you can be notified about school information and events.
- Can check notices from the teachers.
- Week by week attendance information.
- Reports

Logins will be sent to the email addresses supplied with enrolment. Please advise if you change your email address to ensure you are kept up to date with activities and communications from the school.

This provides essential communication with the school – please download it!



## Information and Procedures



### School Hours

8.25am -	8.35am	Students arrive
8.40am -		Commence school
10.50am -	11.30am	Lunch (students eat 11:15am-11:30am)
1.30pm -	1.50pm	Recess
2.50pm -		Students finish

### Absences

Under section 25 of the School Education Act 1999, parents are required to notify the school of the reason for their child's absence as soon as possible or within three days of the first day of absence. At Rockingham Lakes Primary School, parents are requested to advise their class teacher in writing of the reason for their child's absence, by email [rockinghamlakes.ps.office@education.wa.edu.au](mailto:rockinghamlakes.ps.office@education.wa.edu.au), through the **Connect** Portal or via our MGM service on 0447 980 783. Students who arrive to school after 8:40am will be recorded as late and need to sign in at the front office.

### Accidents / Illness

If your child is injured or becomes ill, all care and attention will be given and we will endeavour to contact you. In an emergency the school may need to seek outside medical assistance which may incur some cost to you. To ensure we can contact you, please notify the school of any change of address or telephone numbers.

### Allergy aware

Rockingham Lakes is an 'allergy aware' school. We ask parents to be mindful of others' allergies, particularly with respect to nuts and nut products in food brought to school. Please speak with your class teacher if you are unsure what is appropriate.

If your child is celebrating a birthday and you would like to bring in a birthday cake, please ensure food items are store bought and individual items; for example, mini cupcakes or wrap items like fredo frogs.

### Before and After School Care

Village OSHC run Before, After and Vacation school care here on site. This service is available Monday to Friday and during school holidays. For further information about this program, including availability and cost, please contact Village OSHC directly on 1300 366 437 or [visit their website at www.villageoshc.com.au](http://www.villageoshc.com.au)





## Kindergarten Information

At Rockingham Lakes Primary School we respect and acknowledge that all children are unique and have their own individual learning journey to undertake. Children learn best in an intentional play-based environment. We believe that a balance between child-initiated experiences, spontaneous teachable moments and explicit teaching accommodates the growth of the whole child. Relationships between educators and families are essential in developing a child's sense of belonging and wellbeing. Together with elements of challenge, risk taking and independence building, we promote an intrinsic love of learning.

## What To Bring Every Day for Kindergarten

- A large bag for personal belongings, e.g. lunch, hat and to carry work home in.
  - A change of clothes (in case of 'accidents' or if your child gets wet during activities or play).
  - A bucket hat to be kept in your child's bag at all times. School hats are ideal, however if not, please ensure that the hat is broad brimmed as these offer maximum sun protection. Hats are compulsory all year.
  - A drink bottle for water.
  - Please supply your child with a healthy lunch and recess snack, being mindful that it may be kept in their school bag until lunch time.
- Please label all items with your child's name

## Dress Code / Uniforms

As per the RLPS school dress code, all students are expected to wear full school uniform.

- **Headwear** - A bucket hat is to be worn for outdoor activities throughout the year (refer to Sunsmart policy on Connect).
- **Footwear** - Easy slip on shoes or sneakers for winter and sandals for summer are preferable. Thongs are not considered safe or appropriate.
- **Hair** - Must be tied back at all times.
- **Jewellery** – The only items of jewellery permitted are:
  - Small sleepers or stud earrings
  - Items worn for significant personal or cultural reasons (these need written confirmation from parents of the reason and then administration approval).
- **Nail Polish, make-up and necklaces are not permitted**

**PLEASE MAKE SURE ALL THE ABOVE ITEMS ARE CLEARLY MARKED WITH YOUR CHILD'S NAME.**





## **Delivery and Collection of Children**

For the safety of your child, please do not let your child walk into class unsupervised. Please remain with your child until the door is opened at 8.25am. Children must not be dropped off in the car park or left outside the Kindergarten to walk in alone. Parents are invited into the classroom until 8.40 each morning.

**Students arriving after 8.40am will require a late note from the front office.**

Please ensure you are waiting when your child is dismissed at 2.50pm. Please advise us if anyone other than the usual parent is to collect your child. If this is to become a regular arrangement, please inform us in writing. An early release note will need to be completed at the front office, before collecting your child, if you wish to collect your child before 2.50pm.

Please bring identification with you.

## **What will your child do at Kindergarten?**

Kindergarten is an environment where children develop confident self-identities and build the social and emotional foundation they require throughout life. Children at this age learn best through guided play. The play is carefully planned by teachers and suited to the needs of the children. Children will learn skills, knowledge and ideas through this play. Kindergarten is the first step in your child's formal educational journey. We follow the Education Department's Kindergarten Curriculum Guidelines which expose children to a wide range of learning opportunities.

## **Campus Site Rules – Before and After School**

Students should not arrive prior to 8:25am

Pets are not permitted on school grounds

Bikes and scooters are not to be ridden on school grounds

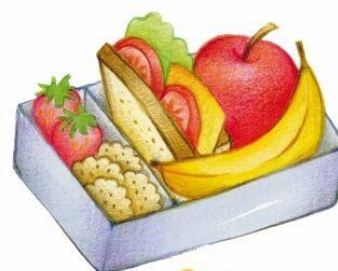
Students are not permitted to play on equipment before or after school

Mobile phones must be handed in to the library before school

## **Canteen**

Our canteen is organised and run by the P&C Association. The canteen provides a summer and winter menu and is open every day of the week. If you are able to assist in any way please contact the canteen. Orders need to be placed at the canteen by 8:40am each day. Online ordering is also available and orders must be made by 8:30am online via Quickcliq – [www.quickcliq.com.au](http://www.quickcliq.com.au).

Kindy students can order lunch only.





## Parent Information Sessions

Parent Information sessions are held by class teachers at the beginning of each year. Additional information sessions may be held throughout the year.

## Parent / Teacher Interviews

Parents are encouraged to visit the school to discuss with the class teacher or administration any concerns they may have regarding their child. To best facilitate these discussions please arrange an appointment prior to the meeting so we may discuss these matters without interruption.

## Parents' and Citizens' Association

The Parents' and Citizens' Association (P&C) has a very valuable role to play in the development of the school's resources and facilities. Its purpose is to assist the school in providing a better education for our children. All parents are invited to attend the regular P&C meetings and take part in activities organised by the group. Refer to Connect, the newsletter or P&C Facebook page for meeting dates and times.





## Kindy Readiness

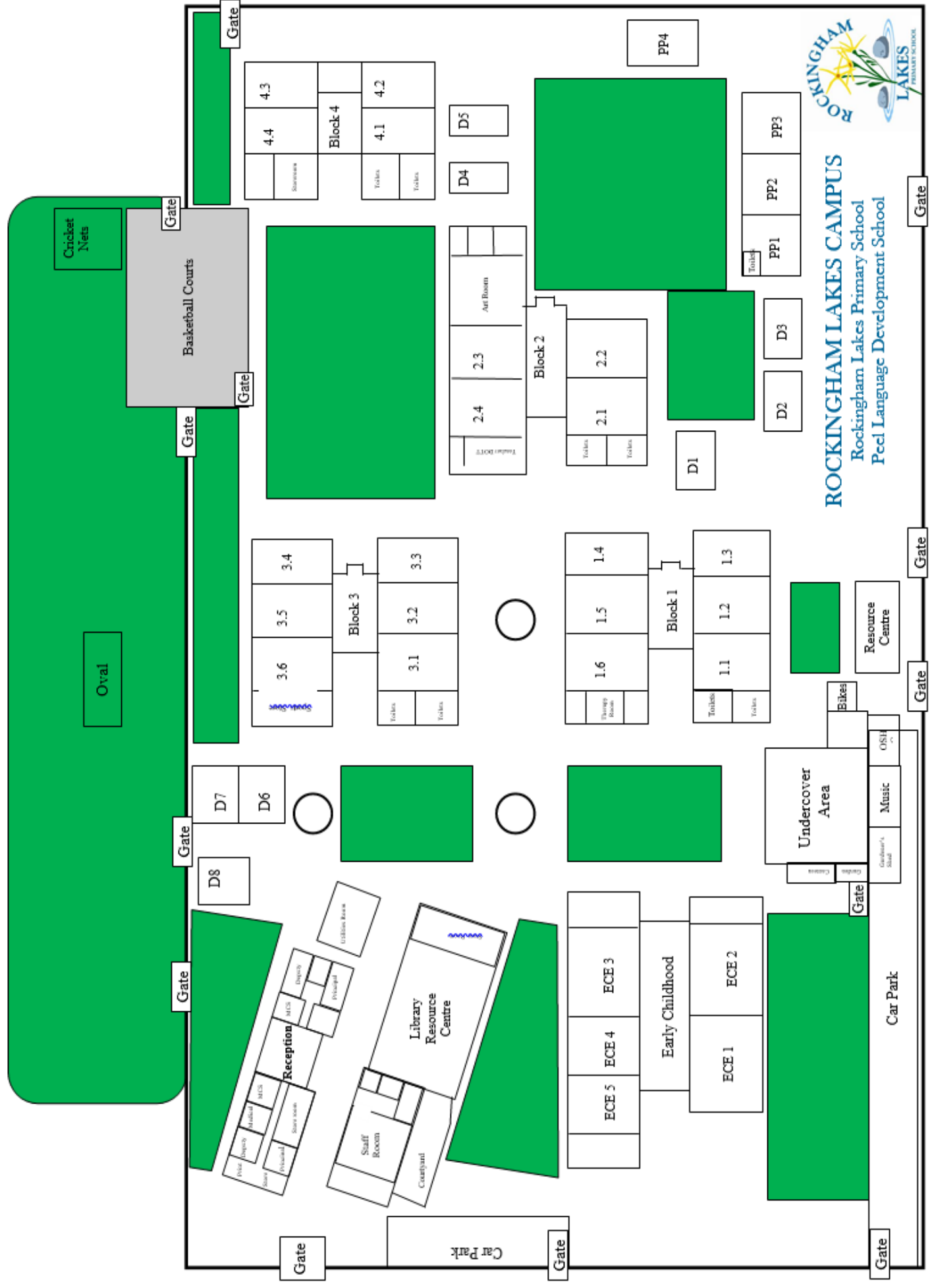
Some of the things your child should be practicing before kindy include:

- Talk, talk, talk! Talk as much as possible to your child about everything and anything
- Read, read, read! Read as many books to your child as you can, even if it is the same book over and over again. Talk about the pictures and the things happening in the story
- Play, play, play! Play with all sorts of items including cars, building blocks, Lego, dolls, mud, and water.
- Visit playgrounds practising running, climbing, jumping, and swinging to build up those big muscles.
- Having a go at cutting, painting, drawing and other craft activities
- Putting on and taking off their shoes (it is often best to start with slip ons or Velcro shoes)
- Dressing themselves (putting on a jacket, hat, etc)
- Covering their mouth when coughing and sneezing
- Blowing their own nose and putting the tissue in the bin
- Putting on sunscreen
- Using the toilet and flushing
- Washing and drying their hands when requested
- Opening and closing their lunch box and water bottle
- Opening packaged food (if provided in their lunch boxes)
- Throwing away their rubbish
- Having them in a regular routine (bedtime the same time each night and getting up early in the morning)





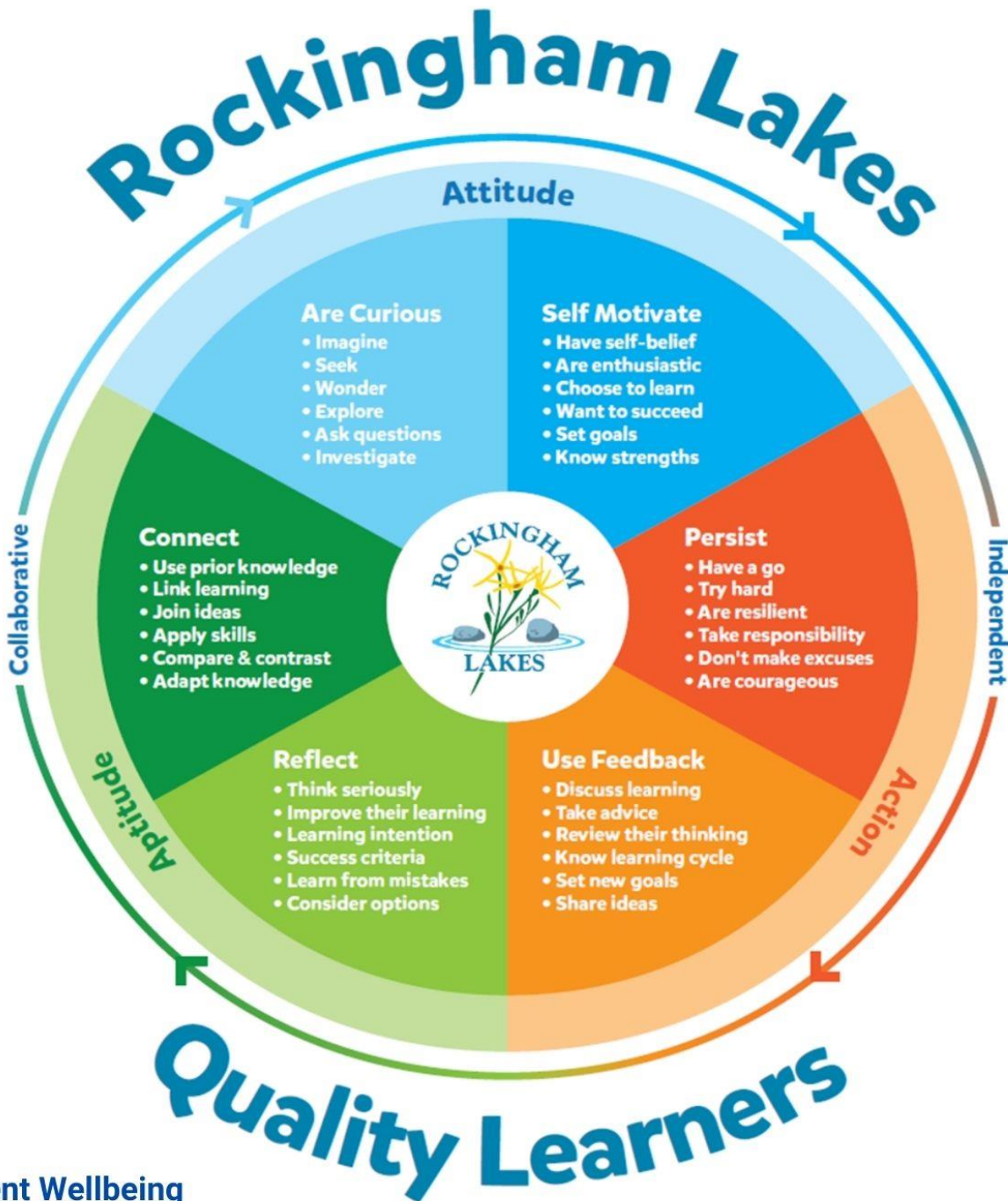
**ROCKINGHAM LAKES CAMPUS**  
Rockingham Lakes Primary School  
Peel Language Development School





## Learner Qualities

We have identified 6 Learner Qualities which we expect all students to develop as they become self-motivated, informed learners. These learner qualities are explicitly taught and become a common language across the school.



## Student Wellbeing

Zones of Regulation – Zones of Regulation is a whole school program used at RLPS to foster self-regulation skills that allow students to recognise and learn how to manage their behaviours. We also run a ZOR Social Skills program to support students who require further intervention around self-regulation.









## NOTES